

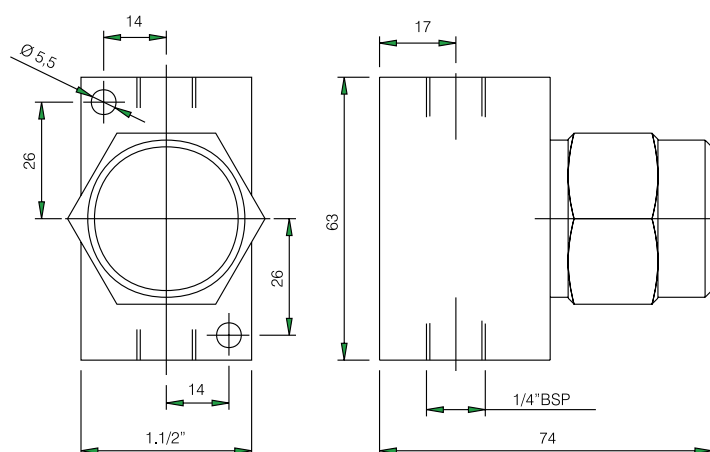
Oil and Grease Line Filter Model FL

Description

Line filters model FL are used in lubricating systems with the objective to hold impurities contained in the lubricants, as such impurities may cause lock the dividers.

Of easy use and maintenance, filters model FL contain permanent filtering elements, i.e., in case they are obstructed by impure lubricant, cover shall be removed and, following to that, the filtering element should be removed as well. Filtering element should then be washed and replaced back into the line.

Filtering elements are supplied with 150-micron mesh.



Purchasing Code

Code: 10567

Reference: ACE-35