

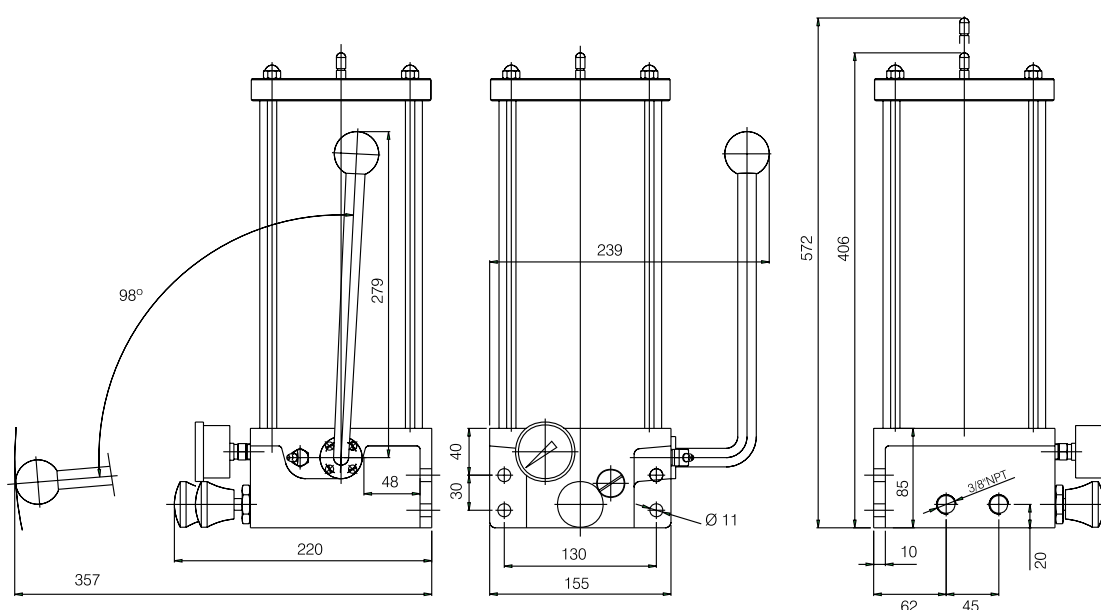
Grease Lubrication Manual Pump Model BMG

Description

Pump model BMG was designed to be used both in Double Line and Progressive Line type centralized systems of grease installations. That is recommended for heavy duty service, superseding automatic pumps of equipment that does not require too frequent lubrication or to be used as spare pumps of large systems.

The pump model BMG is equipped with manual acted flow inverting valve.

By acting the lever, a double action internal piston moves. This, by its turn, continually pressurizes the lubricant to one of the lines. When desired pressure is reached, inverting valve shall be acted causing the lubricant flow under pressure going to the other line, so operating the dividers.



Specifications:

Flow / action	4 cm ³
Working pressure	max. 150 kg/cm ²
Reservoir	2 kg (metallic or acrylic)
Lubricant	grease up to NLGI 2
Temperatures	from -10 °C to +60 °C
Outlet union	3/8 NPT
Assembly	vertical
No. of outlets	1 or 2

Note: With or without with manual inverting valve.

Ordering Code:

Code	Reference	Model	Reservoir (kg)
5012	BMG-1001	BMG-1	2 / Acrylic
10891	BMG-1002	BMG-2	2 / Acrylic
5011	BMG-1003	BMG-1	2 / Metallic
5013	BMG-1004	BMG-2	2 / Metallic