

Double Line Modular Distributors with Modular Base SONED® - Model DBM

Description

Distributor DBM is sturdy and versatile, designed to work both with oil and grease. It has two outlets or only a single one but with double flow.

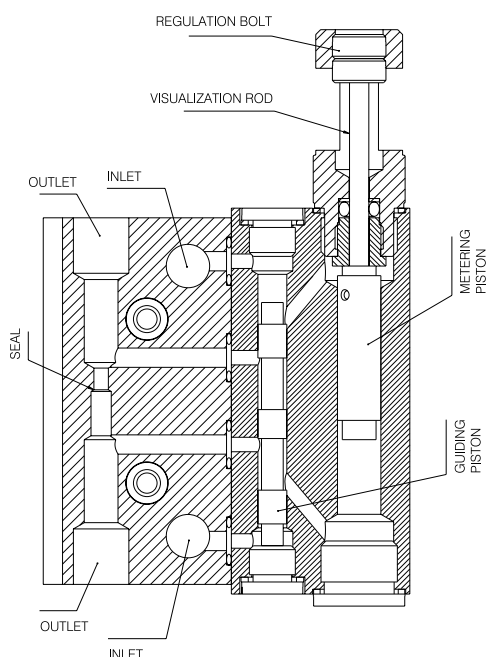
It is composed by a totally modular base that can accept from 1 to 10 distributors. Featuring hydraulic actuator, you may visually see and follow-up operation and regulate flow. It is totally interchangeable among any position of modular base.

Characteristics

- Low maintenance
- Easy changing configuration
 - Changing position of distributors at base
 - Increasing or decreasing quantity of distributors
 - One or two outlets per distributor
- Flow regulation

Specifications

Model	Lubricant	Volume displaced per inversion		Loss due to inversion	Quantity adjusted per 1 turn of regulating screw	Working Pressure		Maximum Temperature
		Minimum	Maximum			Minimum	Maximum	
DBM-30	OIL OR GREASE Max. NLGI 2	0,2 cm ³ (0,012 pol ³)	1,2 cm ³ (0,072 pol ³)	0,27 cm ³ (0,016 pol ³)	0,07 cm ³ (0,004 pol ³)	15 bar	300 bar	90°
DBM-50		1,2 cm ³ (0,072 pol ³)	5,0 cm ³ (0,305 pol ³)		0,16 cm ³ (0,010 pol ³)			



Operation:

Lubricating oil fills up guiding piston chamber and displaces it up to opening passage to metering piston chamber. When this chamber is filled up, the inversion happens, i.e., lubricant fills up guiding piston chamber through the other inlet and fills up the other chamber of guiding piston until meeting way to metering piston. As the other chamber is filled up, when the lubricant pressures metering piston to the other side, automatically the lubricant of the other chamber is expelled from the distributor, following its way up to the lubricating point.

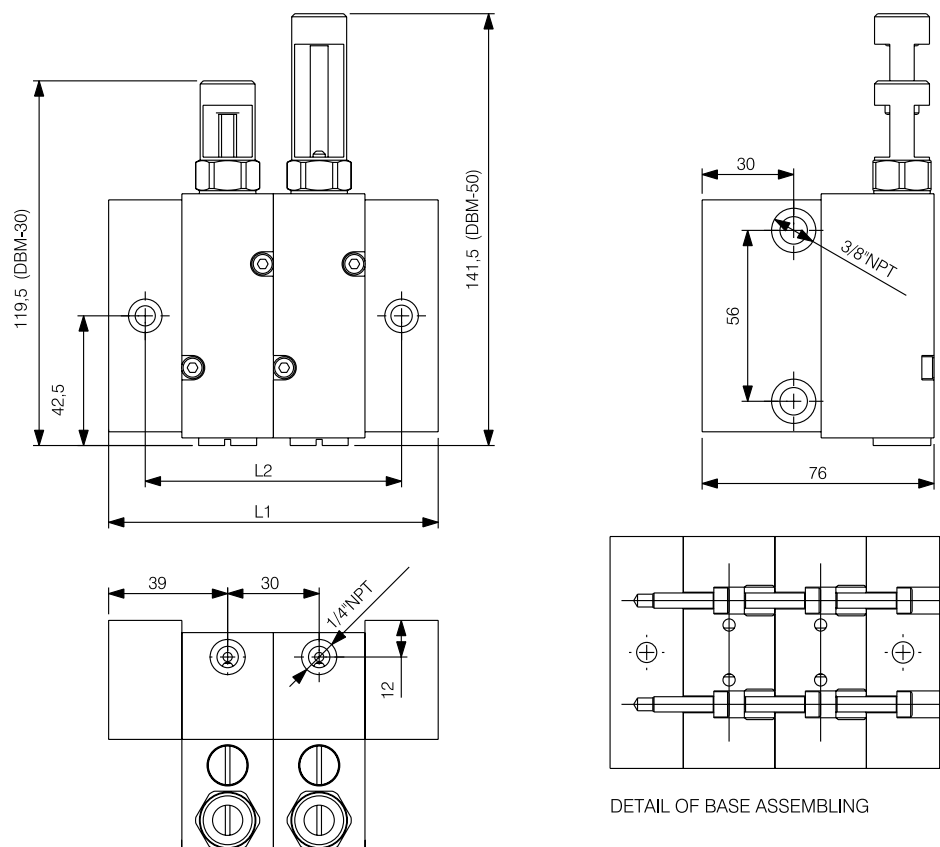
The quantity of lubricant to be metered is regulated through the regulating bolt by limiting visualization rod to operate. The closer to the distributor body, the smaller is the flow.

In order to supersede or to move the distributor, just release fastening bolts, remove existing distributor and position the new distributor and fasten it back with fastening bolts.

When several distributors are to be assembled, release 4 inlet couplings at connecting pipe. Align side by side all distributors intended to be assembled. Assemble corresponding connecting pipes on the base and lock inlet coupling at 4 tips of pipes and fasten the assembly.

Double Line Modular Distributors with Modular Base SONED® - Model DBM

Specifications



Purchasing codes

Model	Nº of Outlets	L1(mm)	L2 (mm)	Reference	Code
DBM-30-1	1 or 2	78	54	0121031	10894
DBM-50-1				0121051	10904
DBM-30-2	2 to 4	108	84	0121032	10895
DBM-50-2				0121052	10905
DBM-30-3	3 to 6	138	114	0121033	10896
DBM-50-3				0121053	10906
DBM-30-4	4 to 8	168	144	0121034	10897
DBM-50-4				0121054	10907
DBM-30-5	5 to 10	198	174	0121035	10898
DBM-50-5				0121055	10908
DBM-30-6	6 to 12	228	204	0121036	10899
DBM-50-6				0121056	10909
DBM-30-7	7 to 14	258	234	0121037	10900
DBM-50-7				0121057	10910
DBM-30-8	8 to 16	288	264	0121038	10901
DBM-50-8				0121058	10911
DBM-30-9	9 to 18	318	294	0121039	10902
DBM-50-9				0121059	10912
DBM-30-10	10 to 20	348	324	0121040	10903
DBM-50-10				0121060	10913