

Double Line Modular Distributors with Modular Base SONED® - Model DBU

Description

Distributor DBU is sturdy and versatile, designed to work both with oil and grease. It has two outlets or only a single one but with double flow.

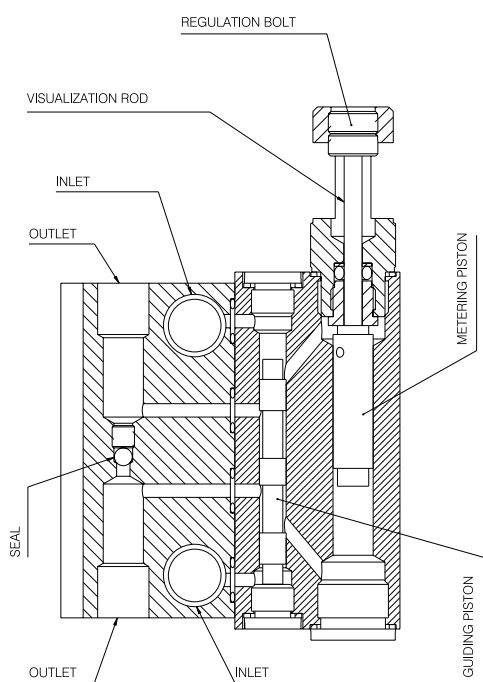
It is composed by a totally modular base that can accept from 1 to 10 distributors. Featuring hydraulic actuator, you may visually see and follow-up operation and regulate flow. It is totally interchangeable among any position of modular base.

Characteristics

- Low maintenance
- Easy changing configuration
 - Changing position of distributors at base
 - Increasing or decreasing quantity of distributors
 - One or two outlets per distributor
- Flow regulation

Specifications

Model	Lubricant	Volume displaced per inversion		Loss due to inversion	Quantity adjusted per 1 turn of regulating screw	Working Pressure		Temperature
		Minimum	Maximum			Minimum	Maximum	
DBU-30	OIL OR GREASE Max. NLGI 2	0,2 cm ³ (0,012 pol ³)	1,2 cm ³ (0,072 pol ³)	0,27 cm ³ (0,016 pol ³)	0,07 cm ³ (0,004 pol ³)	15 bar	400 bar	0 - 90°
DBU-50		1,2 cm ³ (0,072 pol ³)	5,0 cm ³ (0,305 pol ³)		0,16 cm ³ (0,010 pol ³)			



Operation:

Lubricating oil fills up guiding piston chamber and displaces it up to opening passage to metering piston chamber. When this chamber is filled up, the inversion happens, i.e., lubricant fills up guiding piston chamber through the other inlet and fills up the other chamber of guiding piston until meeting way to metering piston. As the other chamber is filled up, when the lubricant pressures metering piston to the other side, automatically the lubricant of the other chamber is expelled from the distributor, following its way up to the lubricating point.

The quantity of lubricant to be metered is regulated through the regulating bolt by limiting visualization rod to operate. The closer to the distributor body, the smaller is the flow.

In order to supersede or to move the distributor, just release fastening bolts, remove existing distributor and position the new distributor and fasten it back with fastening bolts.

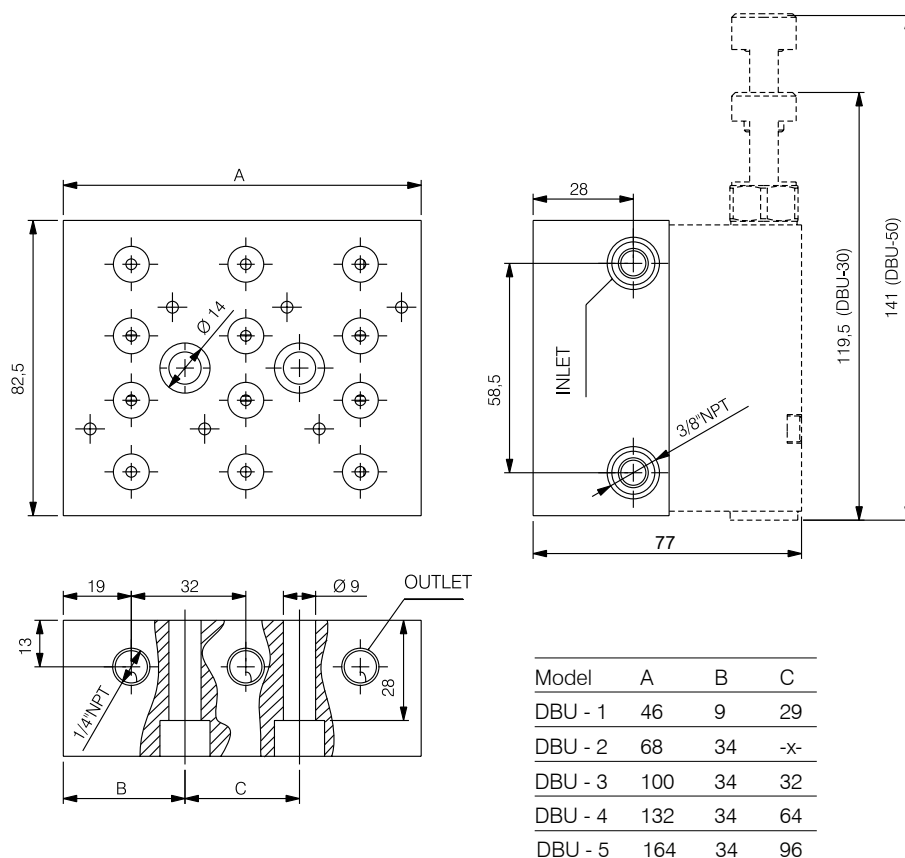
When several distributors are to be assembled, release 4 inlet couplings at connecting pipe. Align side by side all distributors intended to be assembled. Assemble corresponding connecting pipes on the base and lock inlet coupling at 4 tips of pipes and fasten the assembly.

(Continue)

Double Line Modular Distributors with Modular Base SONED® - Model DBU

(Continued)

Dimensions



General tolerance $\pm 1.0\text{mm}$

Purchasing codes

Code	Reference	Model
10914	DBU-0111001	DBU-30-1
10915	DBU-0111002	DBU-30-2
10916	DBU-0111003	DBU-30-3
10917	DBU-0111004	DBU-30-4
10918	DBU-0111005	DBU-50-1
10919	DBU-0111006	DBU-50-2

Código	Referência	Modelo
10920	DBU-0111007	DBU-50-3
10921	DBU-0111008	DBU-50-4
15251	DBU-0111009	DBU-50-5
10594	DBU-0111030	MODULO 30
10922	DBU-0111050	MODULO 50