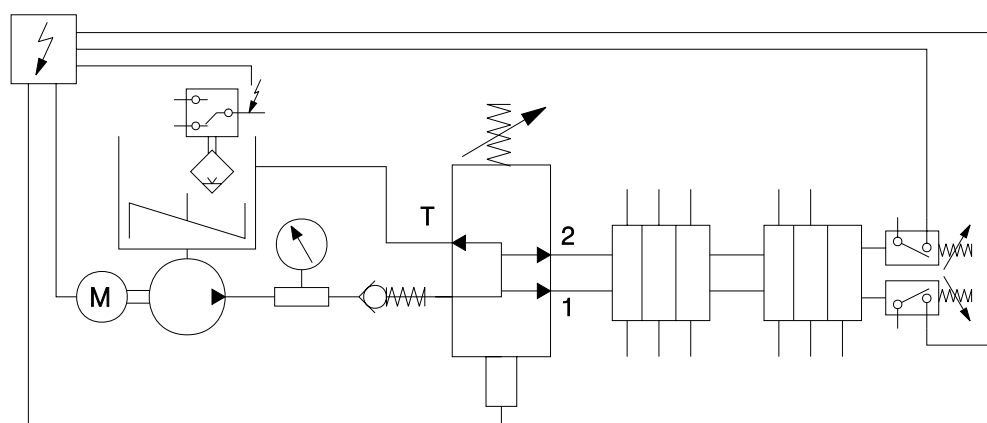


# Double Line System

This system was designed for application in large size equipment (sugar mills, steel mills, etc.).

Double Line System may operate both with oil and grease to be intermittently and alternately pumped to dividers by means of two main lines, so avoiding loss of pressure head in the system as a function of large distances between points to be lubricated. Several optional devices such as controllers, inverting valves, relief valves, safety valves, strainers, etc., allow ample choice in meeting requirements of each project and installation.

## Flow diagram



Observações:

- 1- As linhas 1 e 2 trabalham alternadamente
- 2- A linha "T" é o retorno para o tanque

## Legend

