

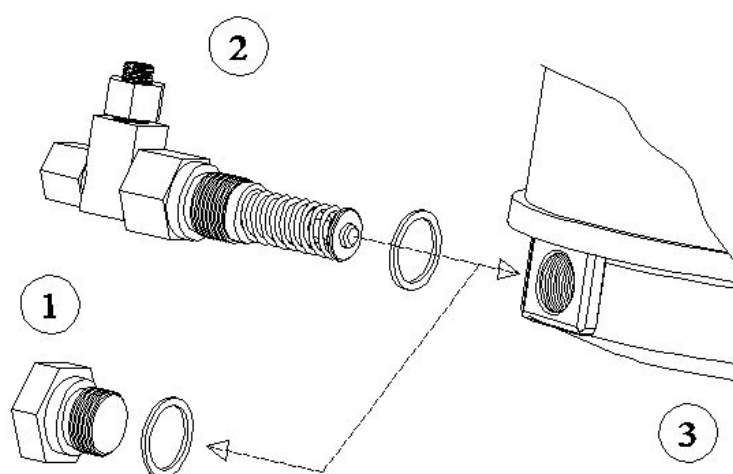
Accessories for Electrical Pumps PEG / PEO / BEG / BEO

Description

Inserting pumping elements

In order to insert an additional pumping element, it is necessary to remove the closing plug (1) and to fasten the pumping element (2) into pump casing (3). Be careful, so that during assembling operation, piston return spring and guiding ring remain centralized.

For version PEG-2 / PEO-2 / PEG-02 / PEO-025, adjusting tool torque used at closing plug and pumping element may not surpass 35/40 Newton/m².



Adjusting maximum pressure valve

Each pumping element incorporates a maximum pressure valve to protect the system against excess. Adjust may be done by releasing lock nut (see position 4) and turning adjusting screw clockwise to increase pressure and counterclockwise to decrease, as required by the system.

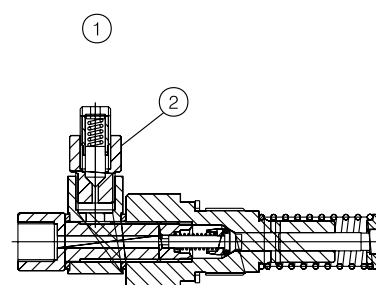
Fixed pumping element

Overall features

All electrical pumps model PEG, PEO, BEG and BEO may be equipped with a second and a third pumping element to feed other main pressure lines or to increase flow at same pressure line. All pump elements are equipped with a 360° articulated joint to facilitate installation. Beside it, there is a relief valve to protect the system against excess pressure.

Purchasing codes and spare parts table

| Position | Description | Reference | Code |
|----------|--------------------------|------------|------|
| 1 | Complete pumping element | 00.900.1 | 5152 |
| 2 | Relief valve | A68.075011 | 9459 |



(Continue)

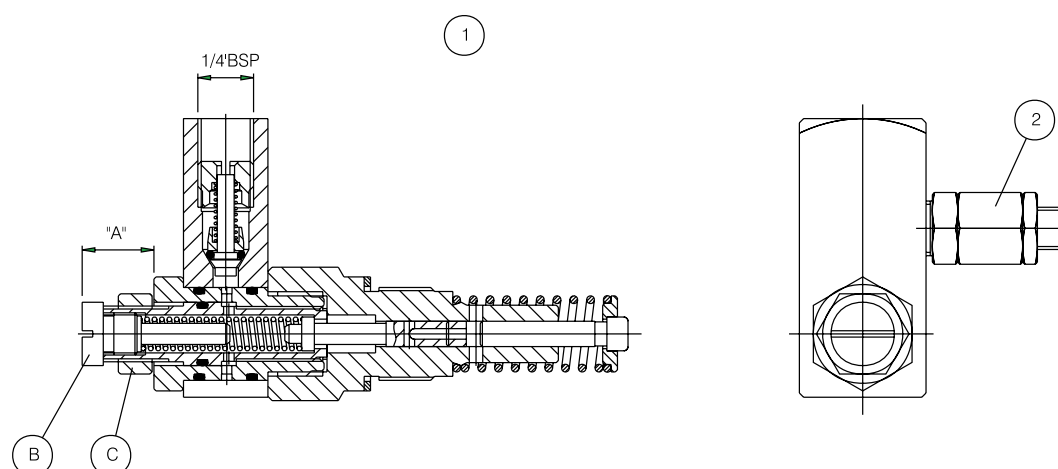
Accessories for Electrical Pumps PEG / PEO / BEG / BEO

(Continued)

Adjustable pumping element

Overall features

All electrical pumps model PEG / PEO / BEG / BEO may be equipped with a second and a third pumping element to feed other main pressure lines or to increase flow at same pressure line. All pump elements are equipped with a 360° articulated joint to facilitate installation. Beside it, there is a relief valve to protect the system against excess pressure.



Adjusting

In order to vary nominal pump discharge, it is necessary to loosen locknut (position C) and turn adjusting screw position B) clockwise to reduce and counterclockwise to increase lubricant discharge.

For guiding, please refer to discharge adjusting table that relates discharge/cycle and the distance "A". When discharge is finally set, it is of paramount importance to fasten locknut again (position C).

Discharge adjusting table

| A | Discharge / Cycle | Percentage |
|------|----------------------|------------|
| 23.6 | 0.16 cm ³ | 100 % |
| 22.5 | 0.12 cm ³ | 75 % |
| 21 | 0.08 cm ³ | 50 % |
| 19.5 | 0.04 cm ³ | 25 % |
| 18.5 | 0.01 cm ³ | 6 % |
| 17.5 | 0.00 cm ³ | 0 % |

Purchasing codes and spare parts table

| Position | Description | Reference | Code |
|----------|--------------------------|------------|------|
| 1 | Complete pumping element | 00.900.3 | 5153 |
| 2 | Relief valve | A68.075011 | 9459 |

Important:

"A" shall not be large than 23,6 mm