

Progressive Divider Model DPM and DPA

Use of outlets

Each piston of progressive dividers model DPM and DPA is designed for feeding 1 or 2 outlets. They are normally supplied with two open outlets.

In that case (figure 1), lubricant flow is done at both outlets.

When it is necessary to block one outlet, separator screw/sphere assembly (figure 2) shall be removed and a plug should be placed in the outlet intended to be blocked. Note that by doing this procedure, remaining outlet shall receive double quantity of lubricant.

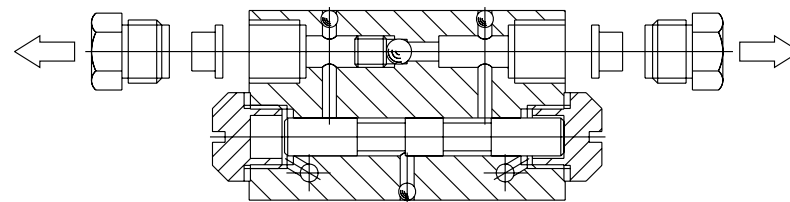


FIG. 1

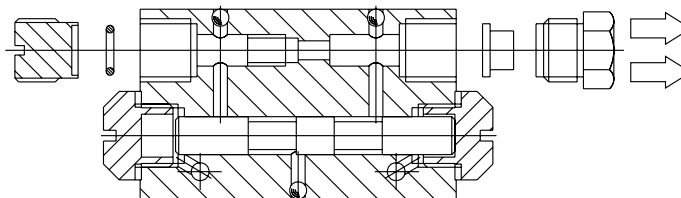


FIG. 2