

Progressive System

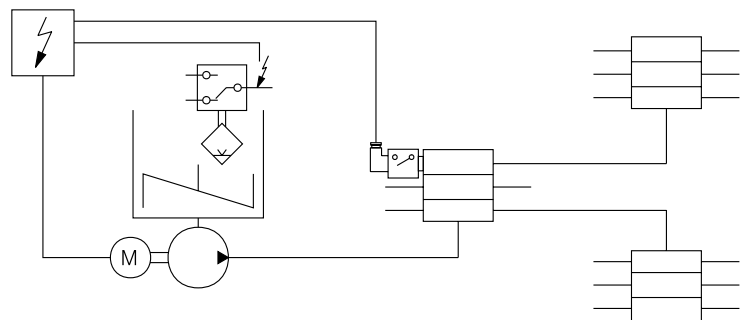
Progressive lubricating systems may operate with oil or grease (viscosity up to NLGI 2) and are indicated for machines that require lubrication with high degree of efficiency and safety.

Its dividers operate under a sequential principle that each point is successively lubricated.

Any impediment in that sequence locks the divider. This stoppage may be detected by a micro switch and transformed into external alarm signal or shut the machine down.

Pumps of Progressive System are available in the versions manual, pneumatic or electrical driving. Controllers / timers, performance indicators and line filters are optional items that may be supplied to complete the System. Progressive Systems may be supplied for intermittent work with single, total use of lubricant or continuous and circulating work.

Flow diagram



Legend

