

Electrical Pump for Oil Model MPT-500

Description

This pump may be used for lubricating medium and large size machines with a large number of lubricating points.

Specifications

Discharge/Minute	0.5 liter
Working pressure	Adjustable 15 - 50 kg/cm ²
Relief valve	0.7 kg/cm ²
Plastic reservoir	3 liters - 6 liters
Suction strainer	250 micron
Pressure gauge	0 - 60 kg/cm ² or 0 - 870 psi
Discharge port	M 12x1 tube Ø 6 mm
Lubricant	Oil 50 - 1000 cSt 40 °C
Minimum level electrical switch	1.5 A, 250 V AC, 200 V DC, 50 W
Motor	Please refer to Table 1
Working temperature	From -20 °C to +80 °C

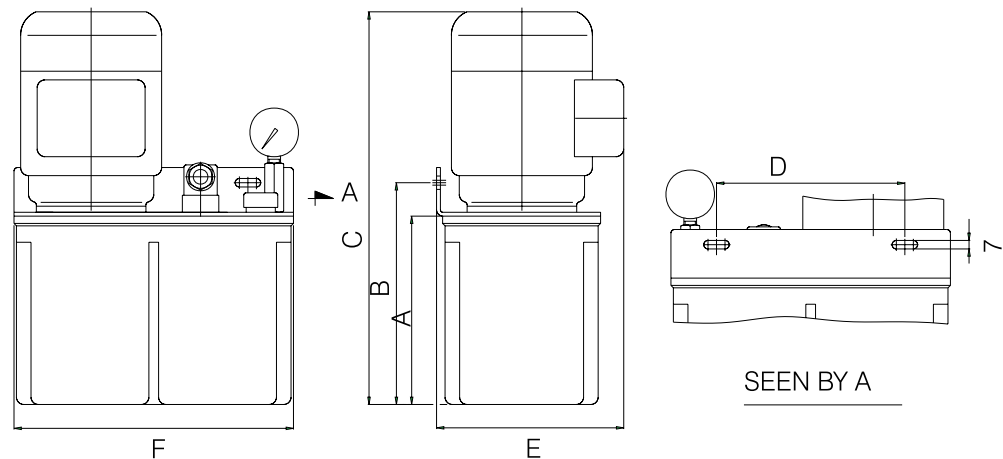


Table 1

Working voltage	220-240 or 380-420 V 254-280 or 440-480 V
Cycles	50/60 Hz
Current	0.6 - 0.35 A
Power	90 W
Protection	IP - 55
Service	S1 continuous
Insulation	Class F
Construction	B14
Type	MEC - 56

Overall dimensions

Pump	A	B	C	D	E	F
MPT-3-NY	155	181	335	167	165	230
MPT-6-NY	250	276	430	167	165	230

Purchasing codes

Code	Reference	Pressure	Type	Capacity of Reservoir
5340	60.822.2	15-50 kg/cm ²	MPT - 3 - NY - 500-50	3 liters / plastic
5342	60.822.3	15-50 kg/cm ²	MPT - 6 - NY - 500-50	6 liters / plastic