

Pneumatic Lubricating Pump for Oil SONED® model SS

Description

This lubricating pump is regularly used in small and average size equipment such as machine tools, textile and printing machines that require periodical lubrication. Due to its compact size, it is of easy application and low cost of acquisition and maintenance.

Oil pump SONED® model SS is designed for centralized systems that use dividers model DDS or DDM.

Pump is equipped with relief valve to avoid overload problems. With a minimum quantity of movable parts, it safely lubricates all points of the system each time lever it is commanded for. It returns to its original resting mode due to spring action.

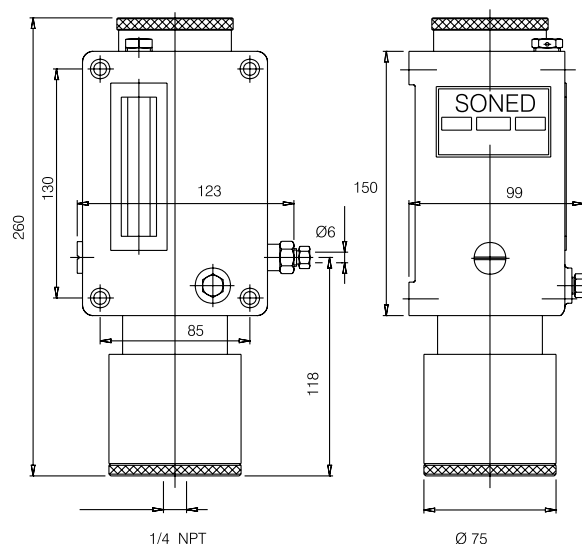
Operation

Actuation is done when it is pressurized with compressed air. Force is conveyed to the piston that pressurizes lubricating main line up to divider. During pump operation, metered quantities of lubricant at dividers are injected into lubrication points. After pressure is relieved, main line is released and divider may reload for next cycle. Lubricant may exits at right side (R) or at left side (L).

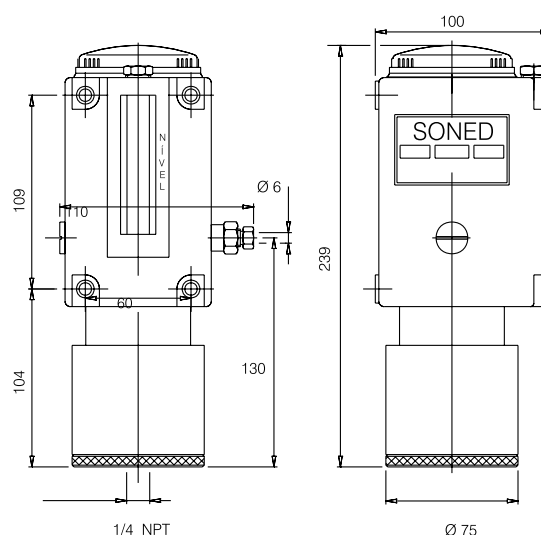
Specifications:

Lubricant	Oil 30 to 352 cSt at 40 °C
Maximum operation temperature	70 °C
Maximum pressure	30 kg/cm ²
Reservoir	0.75 liter - SS2A / 0.45 liter - SS2B
Maximum discharge	15 cm ³ per actuation
Air pressure	From 4 to 7 kg/cm ²
Ratio	5:1

SS2AP



SS2BP



Purchasing codes

Code	Reference	Model	Max. Flow cm ³ per actuation	Max. Air Pressure kg/cm ²	Ratio	Max. Pressure kg/cm ²	Reservoir Liters
2536	SS-1005	SS-2AP D	15	4 a 7	5:1	30	0,75 / Aluminum
2533	SS-1006	SS-2AP E	15	4 a 7	5:1	30	0,75 / Aluminum
2534	SS-1007	SS-2BP D	15	4 a 7	5:1	30	0,45 / Aluminum
10864	SS-1008	SS-2BP E	15	4 a 7	5:1	30	0,45 / Aluminum