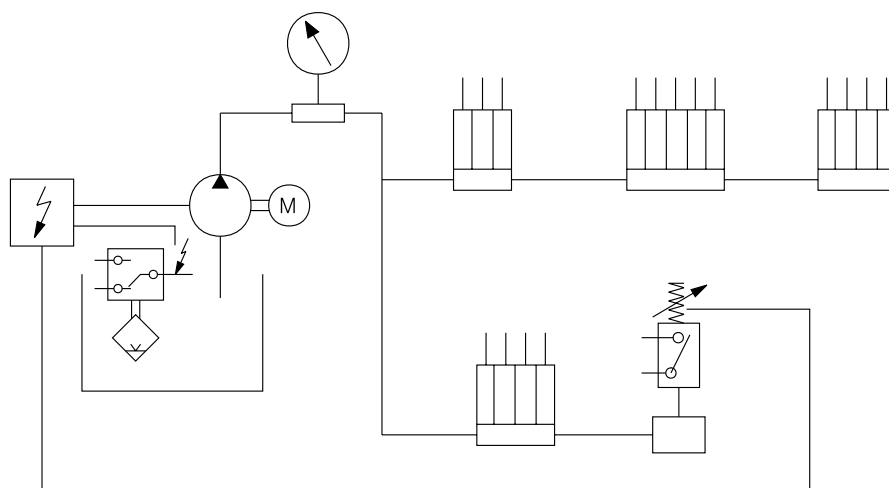


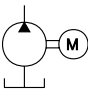
Single Line System


The main characteristic of Single Line System is at its metering valves that are volumetric and each actuation sends a precise quantity of lubricant, either oil or soft grease. An intermittent working pump, manual, pneumatic or electrical driven sends lubricant under pressure through a distribution equipped with metering valves which, by its turn, individually lubricates each point of the machine. A controller / timer may be supplied as optional to control the system.

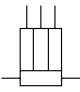
Single Line Lubrication may be applied to small and average size machines to obtain efficient and safe lubrication in a Single way and little investment.

Flow diagram

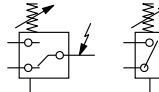


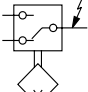

Gear pump for oil - Simple Line


Controller / timer


Manifold Simple Line


Pressure Gauge


1 or 2-terminal pressure switch


Electrical level indicator